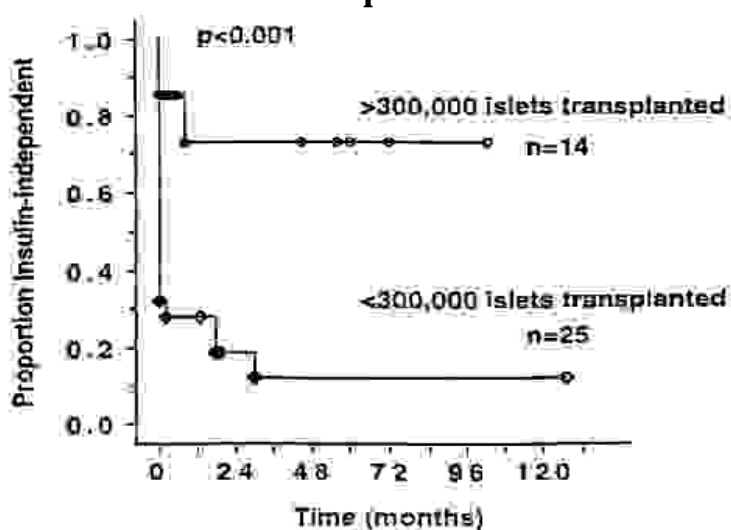


INTERNATIONAL ISLET TRANSPLANT REGISTRY



Remarkable Success Rate of Clinical Islet Autotransplantation



The probability of insulin-independence in 39 patients after total or near-total pancreatectomy and islet autotransplant with respect to the number of islets transplanted. Open points represent censored data.

David E.R. Sutherland et al.

Presented at the American Surgical Association Meeting, Chicago, IL, April 1995

A NUMBER OF INSTITUTIONS HAVE RECENTLY STARTED OR RESUMED CLINICAL ISLET AUTOTRANSPLANTATION FOLLOWING PANCREATECTOMY.

THE ISLET TRANSPLANT REGISTRY HAS BEGUN TO COLLECT AND TO ANALYZE ISLET AUTOGRAFT DATA. RECIPIENT, PROCUREMENT, AND FOLLOW-UP FORMS ARE AVAILABLE ON REQUEST.

Newsletter No. 6

Vol. 5
(No. 1, June),
1995

In this Newsletter

- Summary, Editorial Board, Registry Staff, and Address.....2-3
- Islet Autografts: Institutions. Newly Designed Forms.....4-7
- Results on Fetal Islet Allografts.....8-9
- Results on All Adult Islet Allografts Through Dec. 31, 1994
Including Summaries of All Insulin-Independent Pancreatectomized
and Type 1 Diabetic Adult Islet Allograft Recipients10-15
- Detailed Data on 75 C-Peptide Negative Type 1 Diabetic Adult
Islet Allograft Recipients Transplanted from 1990 to 199316-23
- Common Characteristics of Insulin-Independent Cases.....24-25
- 1-Year Course of Basal C-Peptide according to
Basal C-Peptide at 1-Month Posttransplant.....26
- Islet Transplant Activities in 1994 and 1995. Conclusions.....27
- Acknowledgements.....28